



LOCATION





Welcome to Kishan Signate

At Kishan Signate, the first impression is crafted to be unforgettable. Our grand entry gate stands as a testament to elegance and sophistication, welcoming you to a world of luxury and comfort. The meticulously designed entrance combines modern aesthetics with a touch of traditional charm, setting the stage for the unparalleled lifestyle that awaits within. Step through the gate and experience the promise of a serene and secure community, where every detail has been considered to ensure your peace of mind and delight.





Stroll Through Serenity

Kishan Signate's streets are more than just pathways; they are the arteries of a vibrant community. Designed with both aesthetics and functionality in mind, our wide, tree-lined streets provide a picturesque and tranquil environment for leisurely strolls, morning jogs, and safe play areas for children. The well-planned layout ensures easy navigation and fosters a sense of connection among residents.

As you walk through our meticulously maintained avenues, you'll appreciate the harmonious blend of natural beauty and modern living.





Your Private Retreat

At Kishan Signate, your balcony is more than just an extension of your living space; it's your personal haven. Each balcony offers stunning views of the lush landscapes and serene surroundings, providing a perfect backdrop for your moments of relaxation. Whether you're sipping your morning coffee, enjoying an evening read, or simply soaking in the tranquil ambiance, the balcony at Kishan Signate serves as your private retreat, offering peace and privacy amidst the bustling life. Embrace the luxury of outdoor living right at your doorstep.







Amenities



Swimming Pool



Lush Green Garden



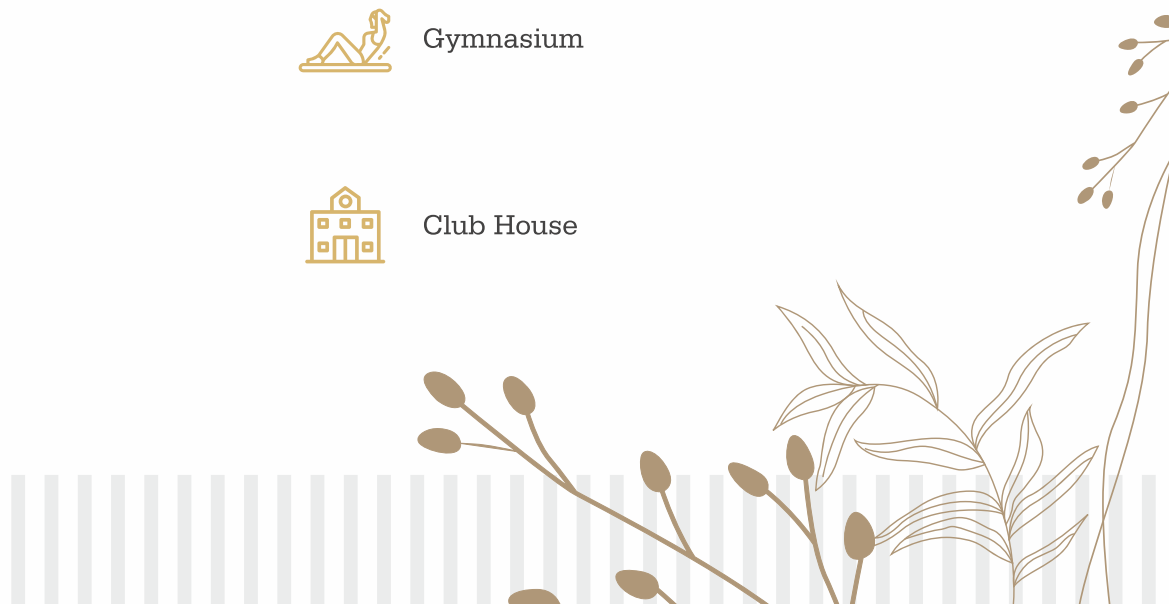
Multi Purpose Hall



Gymnasium

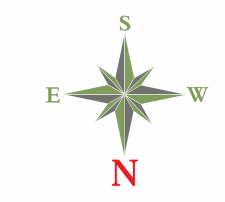


Club House



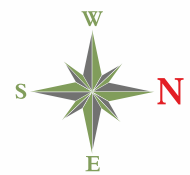


Layout plan

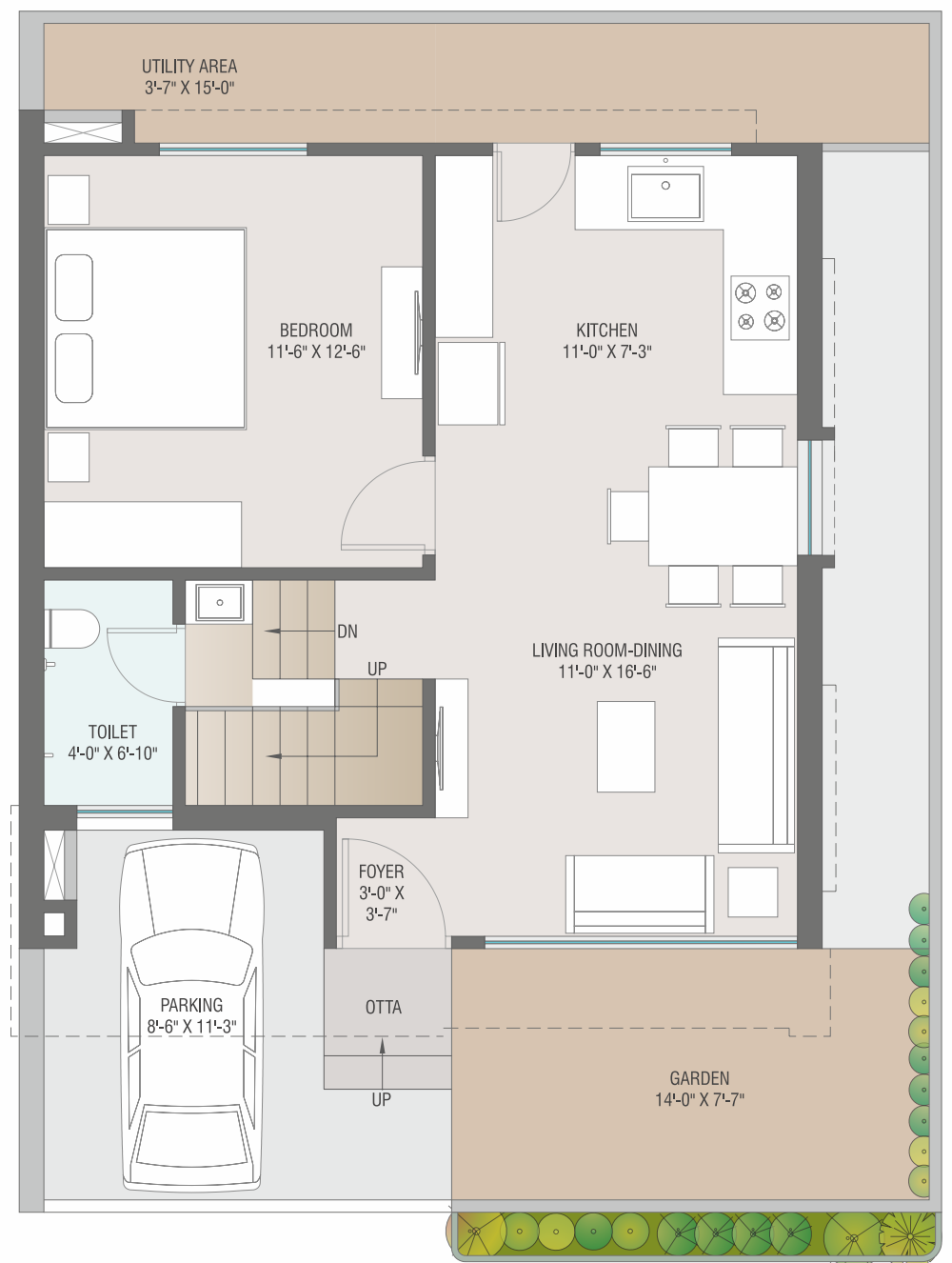




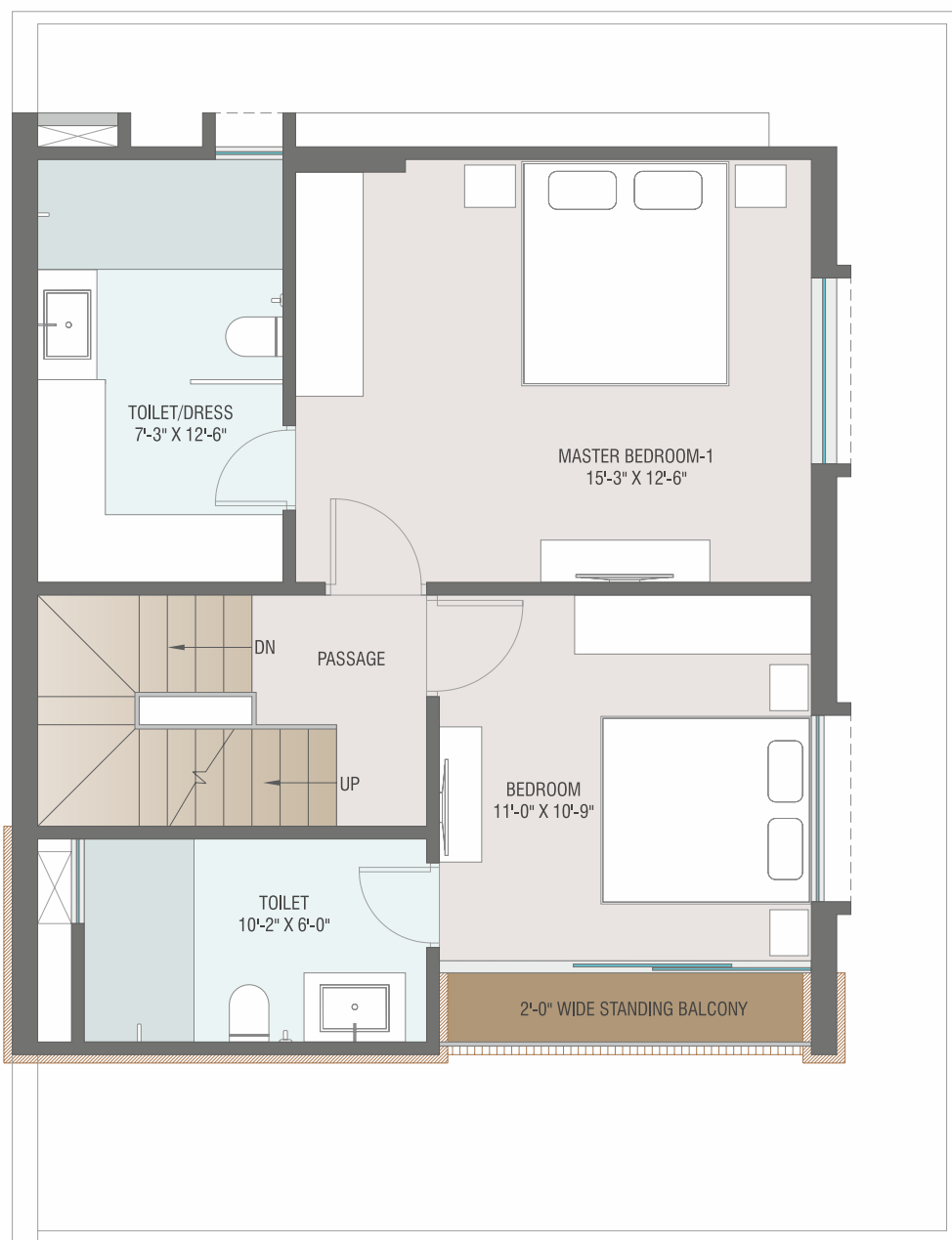
Unit plan



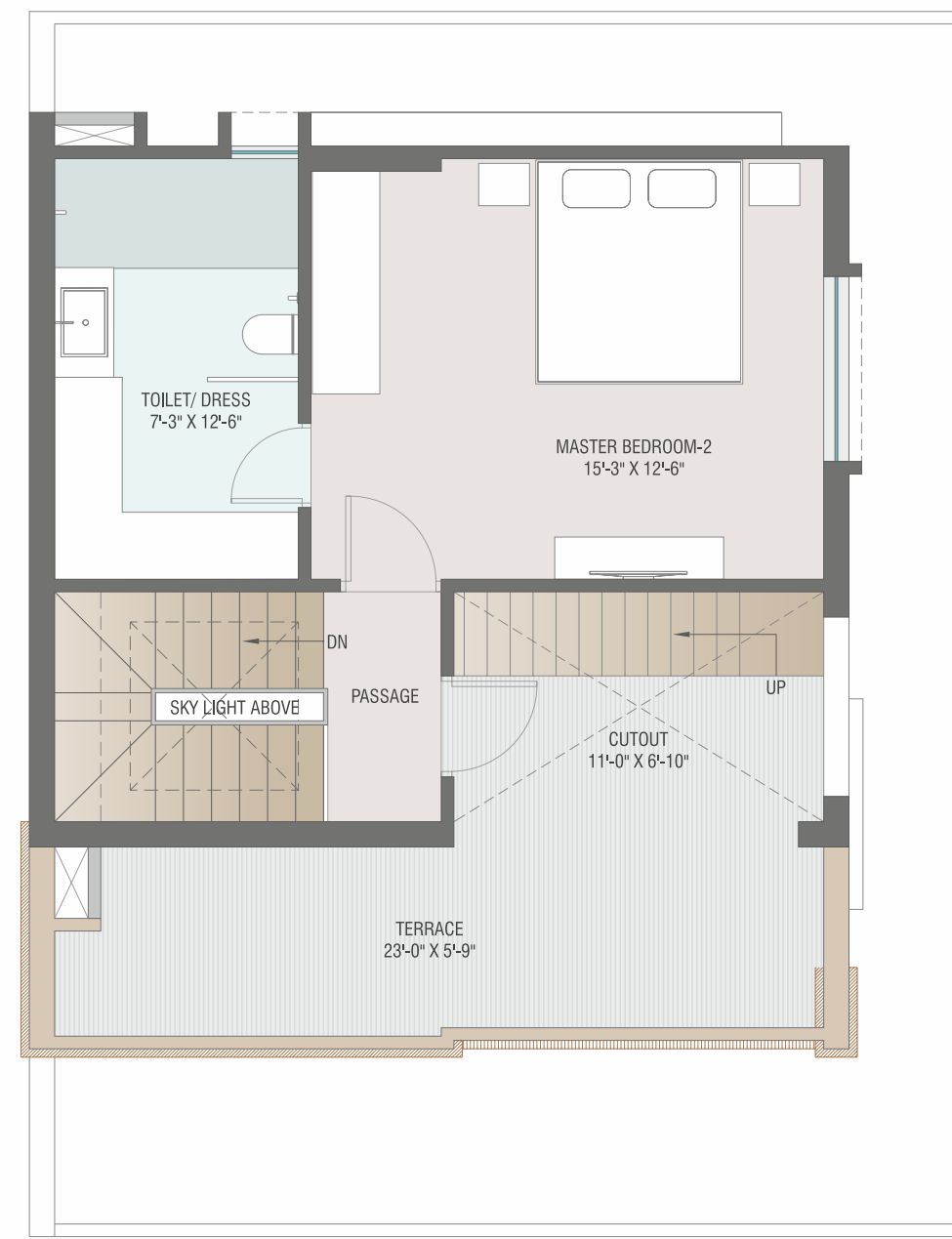
GROUND FLOOR PLAN



FIRST FLOOR PLAN

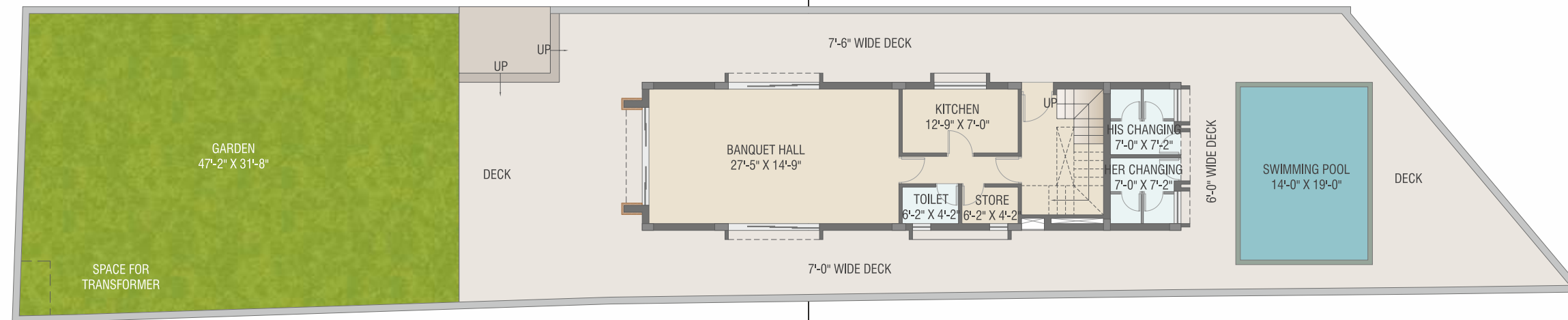


SECOND FLOOR PLAN

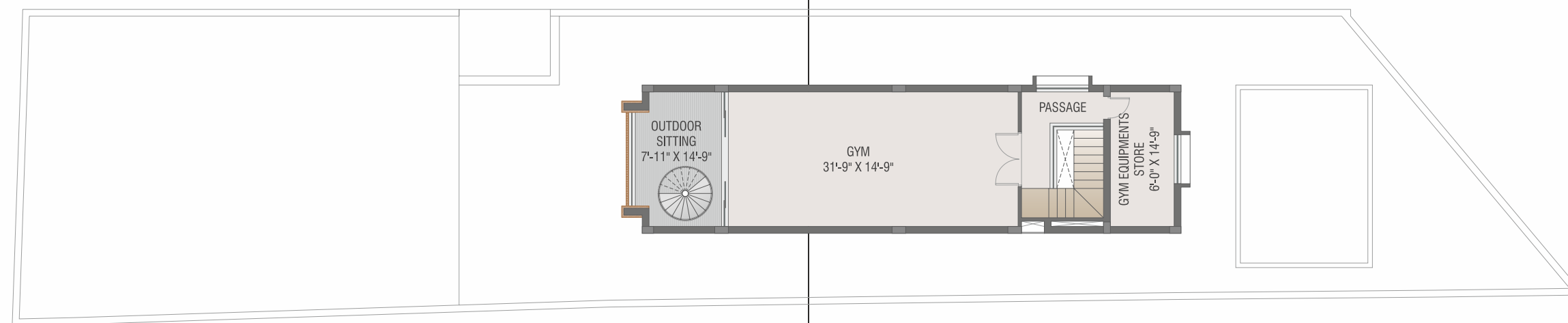




Club House



GROUND FLOOR PLAN



FIRST FLOOR PLAN







Other Amenities

- ✦ 24x7 Security
- ✦ Underground & Overhead water tank
- ✦ 24 Hours water supply
- ✦ Number Plates on Each Unit to Maintain Uniformity
- ✦ Anti termite treatment to the building
- ✦ Under ground cabling in society



Specification



STRUCTURE
All RCC & Brick work as per structural engineer's design



FLOORING
Premium Vitrified tiles in guest lounge, kitchen, dining area & bedrooms.



KITCHEN
Exclusive Granite platform with S.S Sink with designer tiles.
Wash area with ceramic tiles dado & natural stone flooring.



TOILET
Designer bathroom with premium quality fittings & vessels.
Glazed tile dado lintel level.



ELECTRIFICATION
Concealed copper ISI wiring & branded modular switches with sufficient points.



DOORS
Main Door: High quality woodern frame door with veneer paneling on both sides.
Other internal Doors: Stone frames with laminated flush doors.



WINDOW
Anodized aluminum window with safety grill.



PAINT
Internal Mala plaster with Birla putty, primer & external single coat plaster with rustic texture.



TERRACE FINISH
Elegant china mosaic finish with proofing treatment.



Developers:
**VINAYAK
INFRA**

Site: **Kishan Signate**,
Beside GPS School,
Opp. BAPS Hospital,
Atladara, 390012

Mob.:
+91 87340 87777

Website:
www.kishangroup.in
Email:
info.kishansignate@gmail.com

Architect :
Urvi Shah- Traanspace
TRAANSPOCE
Architecture | Interior | Planning | Landscape

Structure :
Ashutosh
Desai

MODE OF PAYMENT: 20% ON BOOKING | 15% ON PLINTH | 15% ON GF SLAB | 15% ON FF SLAB | 15% AT PLASTER | 15% AT FLOORING | 5% ON FINISHING

We request: (1) Possession will be given after one month of settlement of account. (2) Extra work will be executed after receipt of full advance payment (3) Stamp Duty, Registration Charge, GST Tax or any new central govt., Vuda taxes. If applicable shall have to be borne by the client. (4) Continuous default payments leads to cancellation (5) Architect/Developers shall have the rights to change or revise the scheme of any details, herein and any change or revision will be binding to all. (6) In case of delay in light connection by authority, developers will not be responsible. (7) All dimensions are indicative and actual dimensions in each room, plot are & S.B.A might vary. (8) Common compound wall of individual unit will be as per architect's design (9) In case cancellation of booking, 5% of the total value of the bungalow & Payable tax will not be refunded. (10) Any plans, specifications of information in this brochure can not form part of an offer, contract or agreement (11) All members shall have to essentially be the part or the society formed by the association members and shall have to abide by the society by laws. (12) After virtual completion of the work all the repair and the maintenance the drainage, watchman salary, electricity bill etc. shall be borne by society members (13) Members of society are not allowed to change elevation of duplex in any circumstances. (14) This brochure shall not be treated as a legal document, it is only for the purpose information.